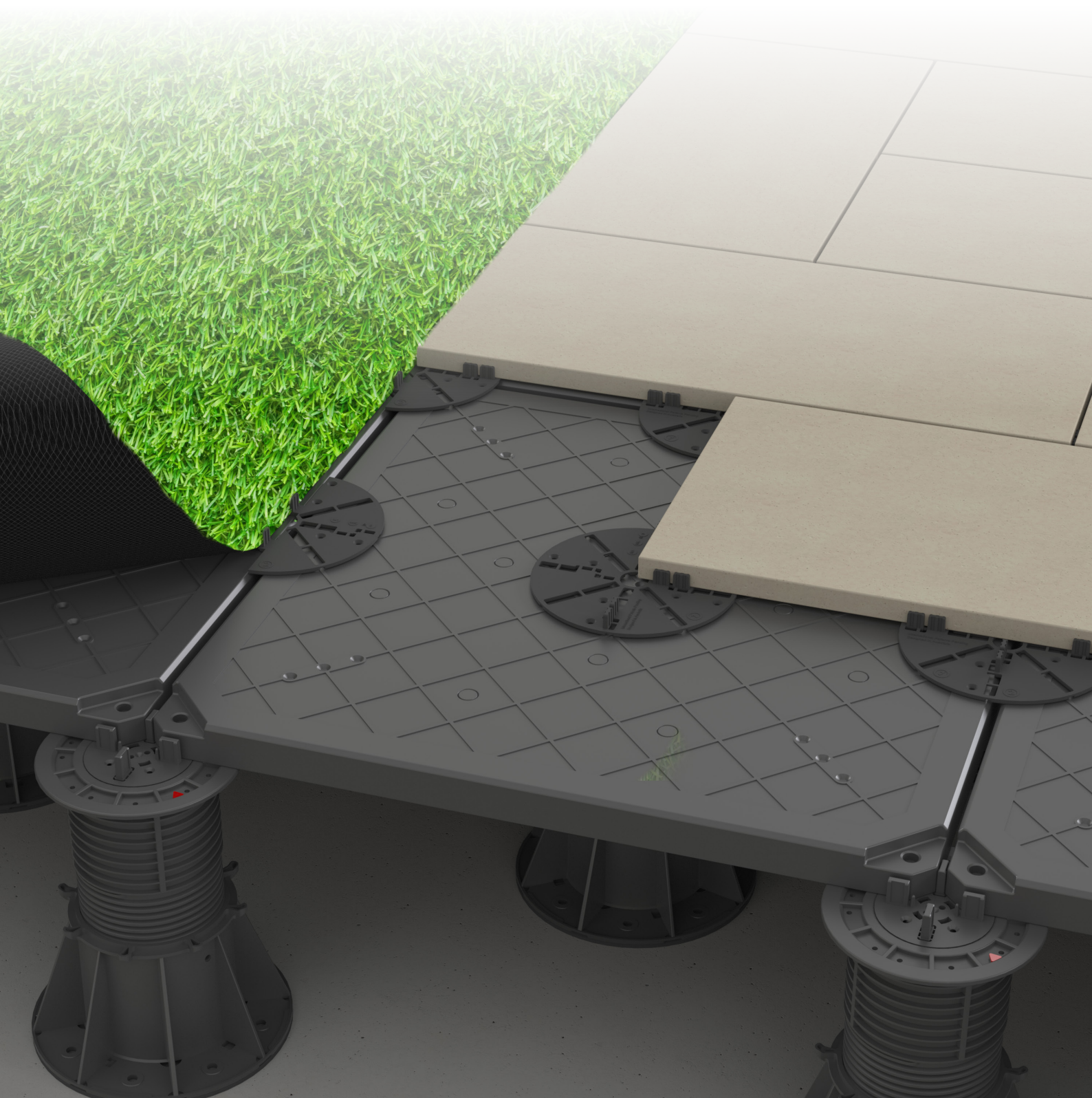


VersiScape™

Support Panel for Landscape Finishes



We make the difference.
The Elmich Difference.

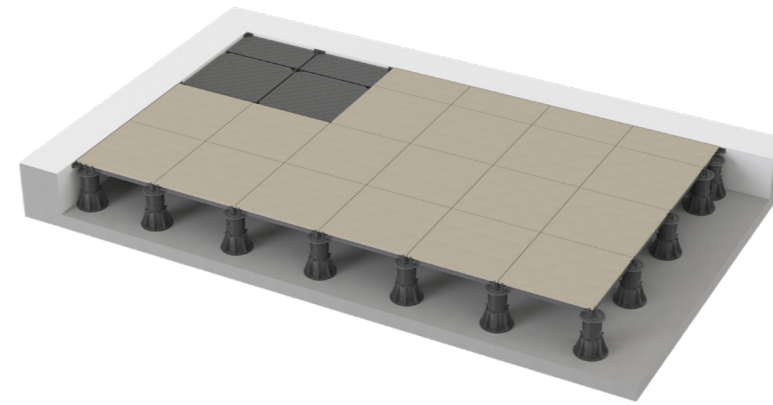
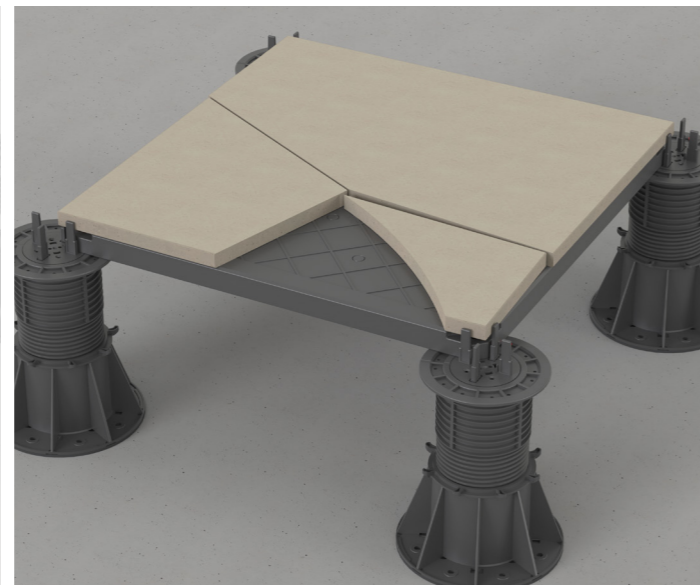
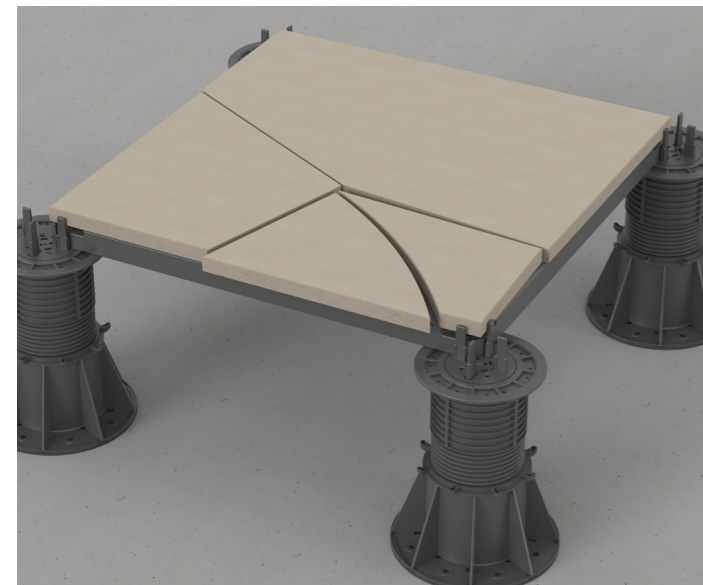
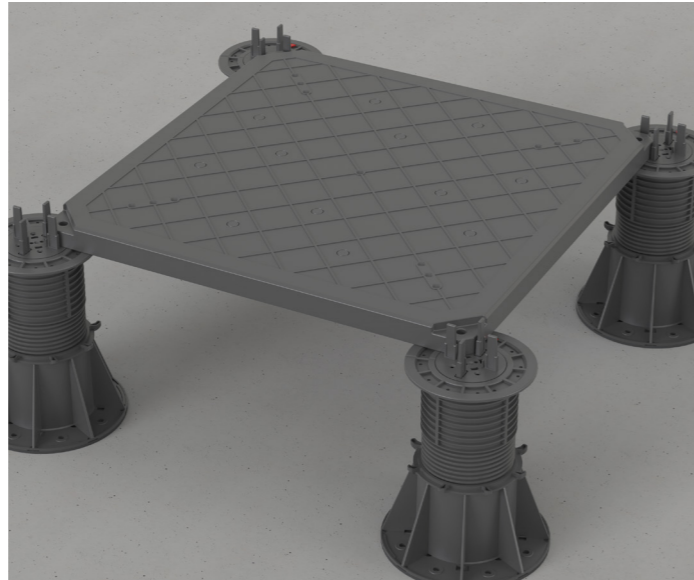


VersiScape™

VersiScape™ is engineered to provide a raised substructure with the strength and stability to create a customisable and safe landscape.

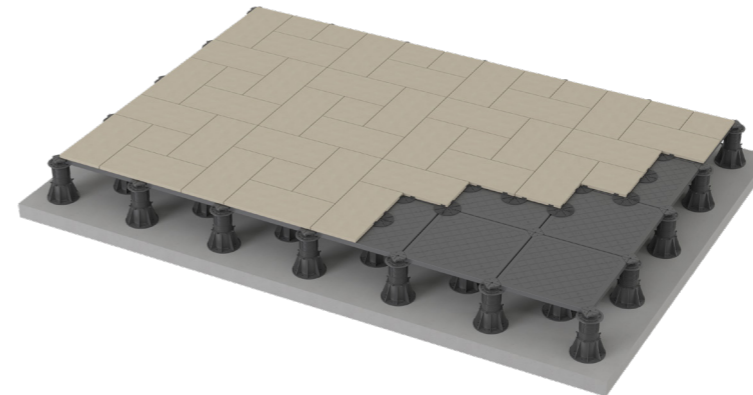
The system constructs a leveled surface that accommodates virtually any landscape finish, from pavers to ceramic tiles of varying size, and minimum thickness of 20mm. Freedom to design does not stop there as it can support artificial turf, gravel-fill, or any other artificial landscape without exceeding raised floor deflection limits.

In the event of accidental tile breakage, the system is able to withstand the weight of broken shards and human loads. This prevents injury to pedestrians and simplifies the maintenance of the broken finishes.



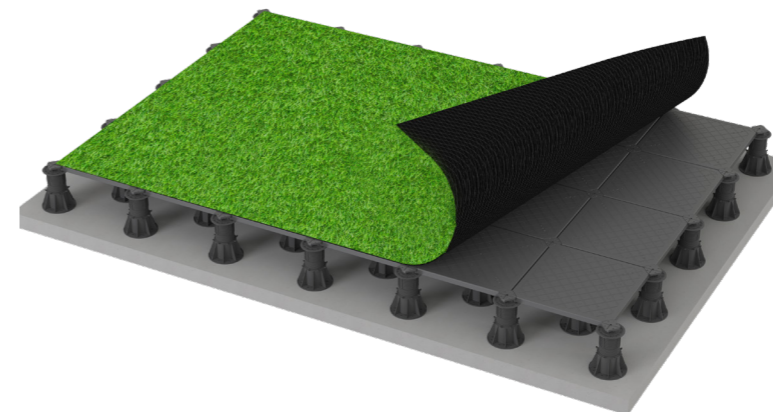
Conventional Paver Assembly

Panel size supports nominal 600x600 mm porcelain pavers.



Variable Paver Assembly

Panels support pavers of varying size, thickness and material allowing for design flexibility.



Artificial Landscapes Assembly

Panels create a levelled surface for non-paver finishes.

Advantages



Height Adjustable



Multiple Configurations



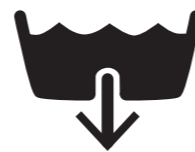
Quick Installation



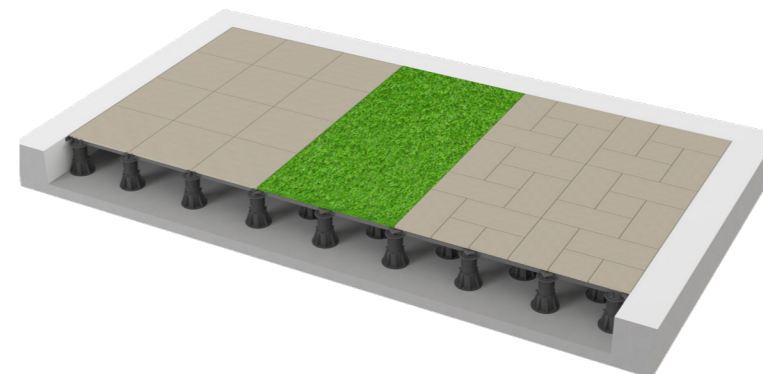
Chemical Resistance



Load Bearing

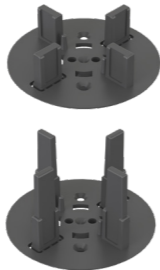
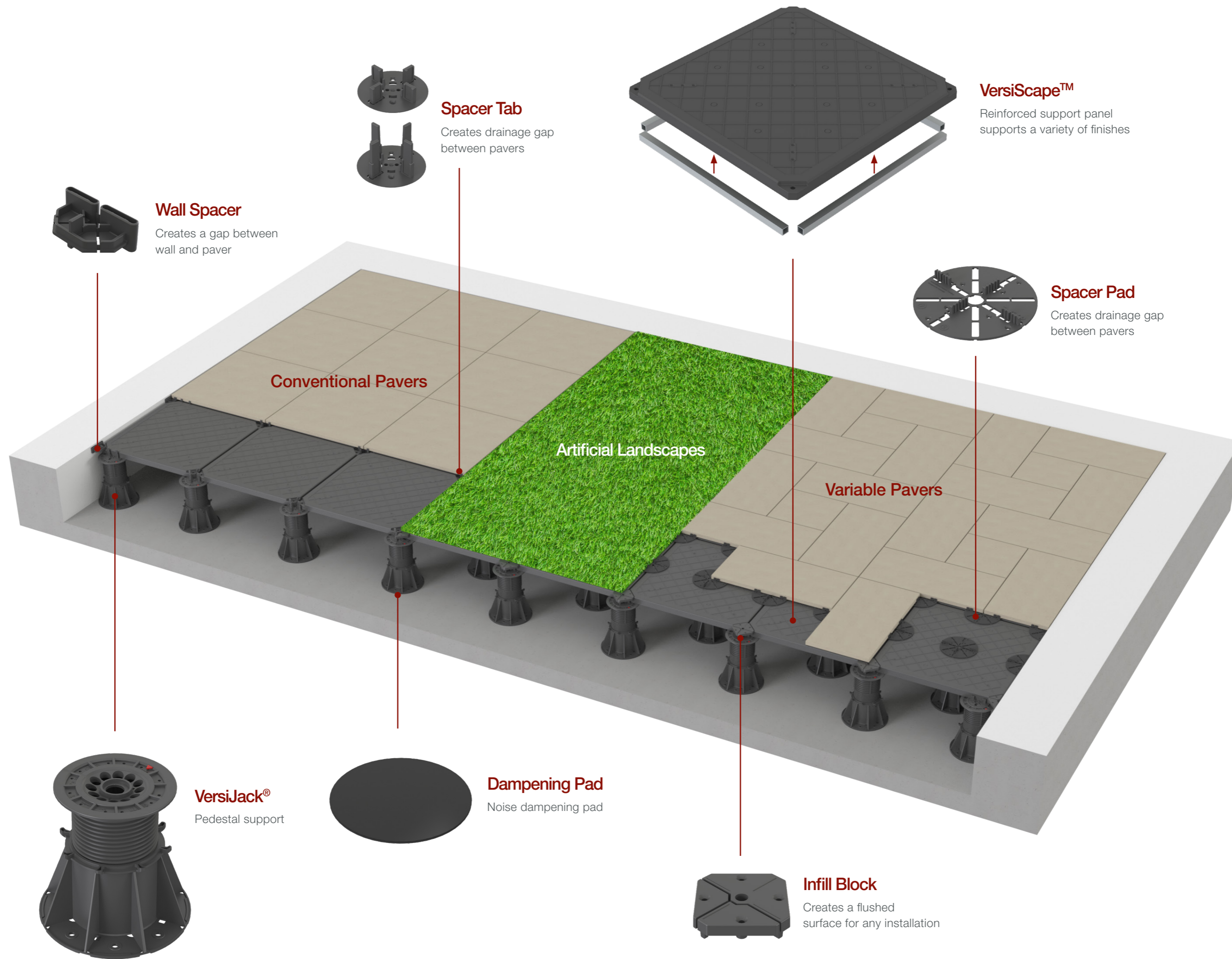


Efficient drainage

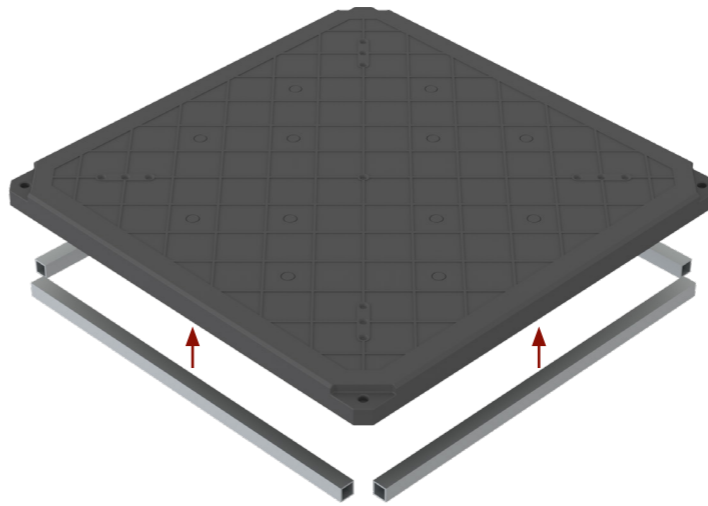


Combination

Merge all the different finishes together if you so choose.



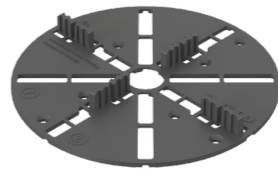
Spacer Tab
Creates drainage gap between pavers



VersiScape™
Reinforced support panel supports a variety of finishes



Wall Spacer
Creates a gap between wall and paver

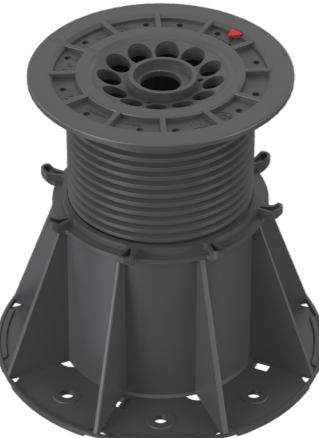


Spacer Pad
Creates drainage gap between pavers

Conventional Pavers

Artificial Landscapes

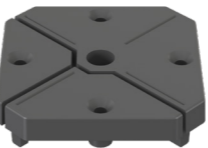
Variable Pavers



VersiJack®
Pedestal support



Dampening Pad
Noise dampening pad



Infill Block
Creates a flushed surface for any installation



Panels may be cut to fit the edges of the installation.

Spacer Tabs create a uniform gap between each paver and provides better surface drainage for the raised floor structure.

Wall Spacer serves as a permanent compressible buffer to allow for expansion, contraction, and paver movement.

Conventional Paver Assembly

VersiScape™ supports 600x600 pavers, providing safety and ease of maintenance should the pavers shatter.



VersiJack®

Pedestal



Spacer Tab

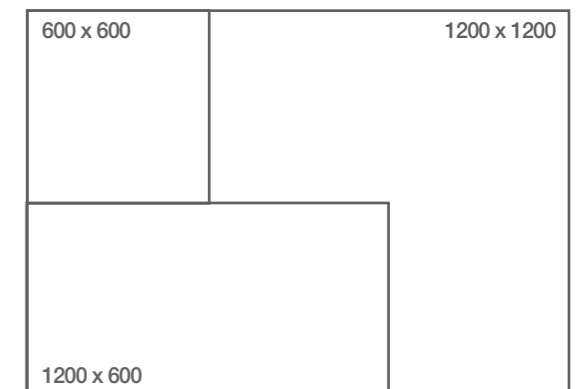
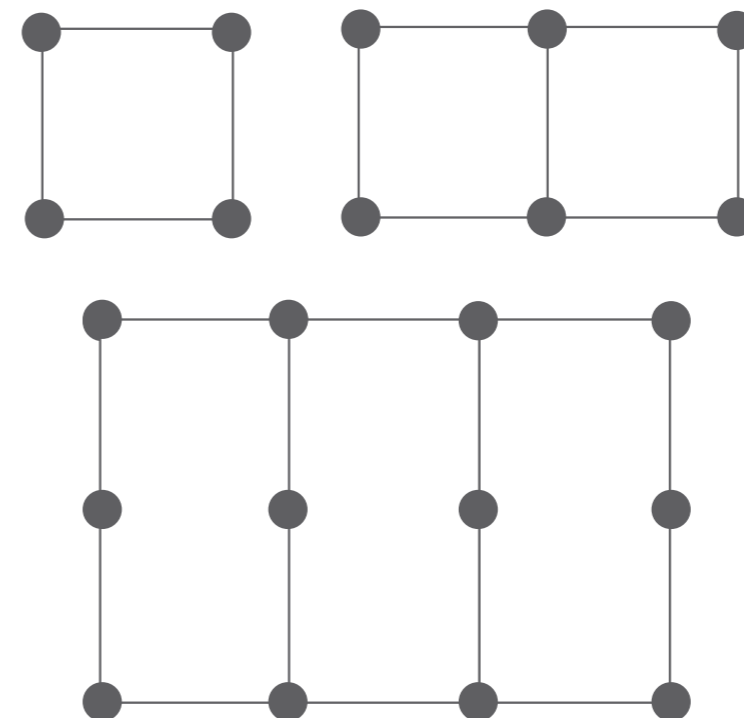


Wall Spacer



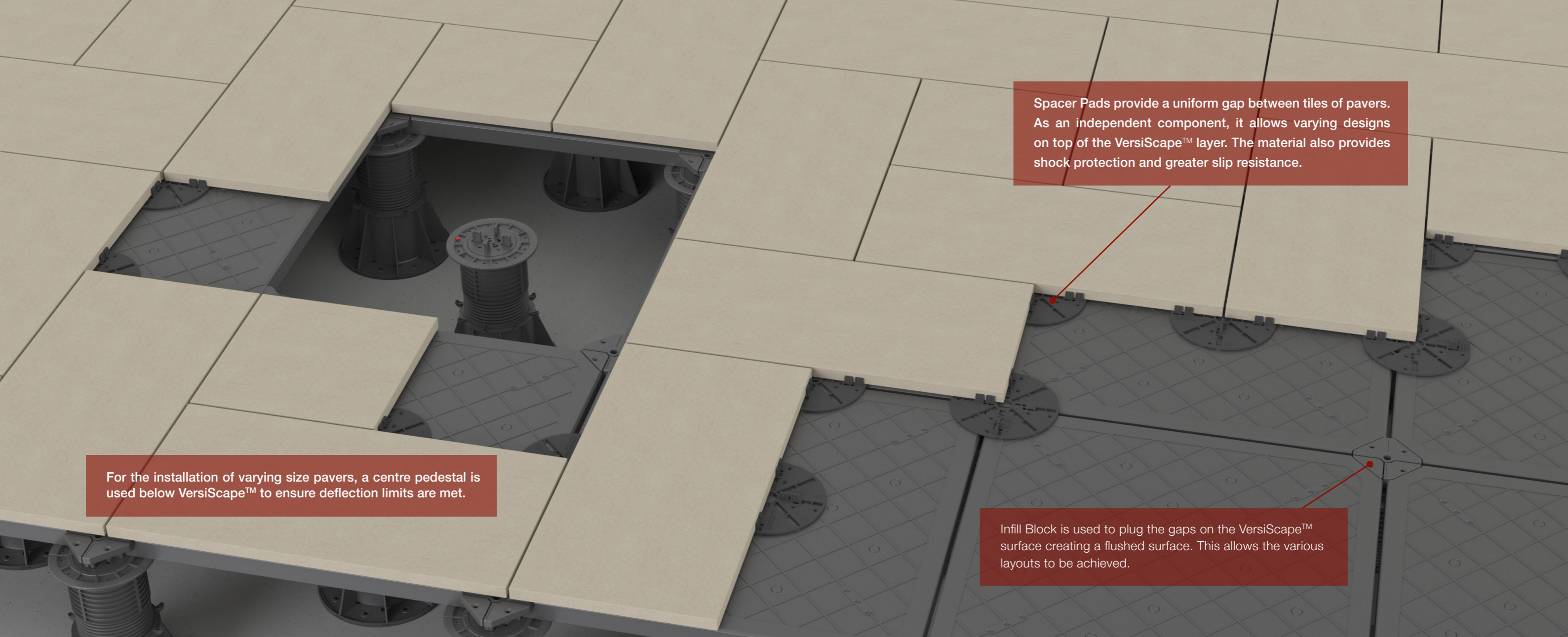
Dampening Pad

Accessories



Conventional Pavers

Supports are only required at the corners of VersiScape™.



Spacer Pads provide a uniform gap between tiles of pavers. As an independent component, it allows varying designs on top of the VersiScape™ layer. The material also provides shock protection and greater slip resistance.

For the installation of varying size pavers, a centre pedestal is used below VersiScape™ to ensure deflection limits are met.

Infill Block is used to plug the gaps on the VersiScape™ surface creating a flushed surface. This allows the various layouts to be achieved.

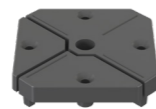
Variable Paver Assembly

VersiScape™ supports pavers of any size allowing Architects the freedom to design a layout of their choosing, while providing safety and ease of maintenance should the pavers shatter.



VersiJack®

Pedestal

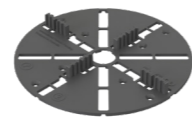


Infill Block



Wall Spacer

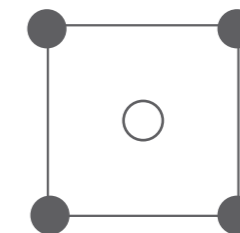
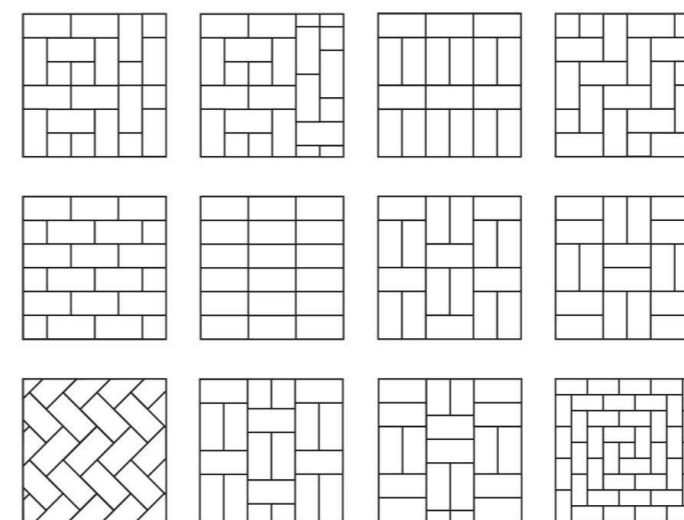
Accessories



Spacer Pad

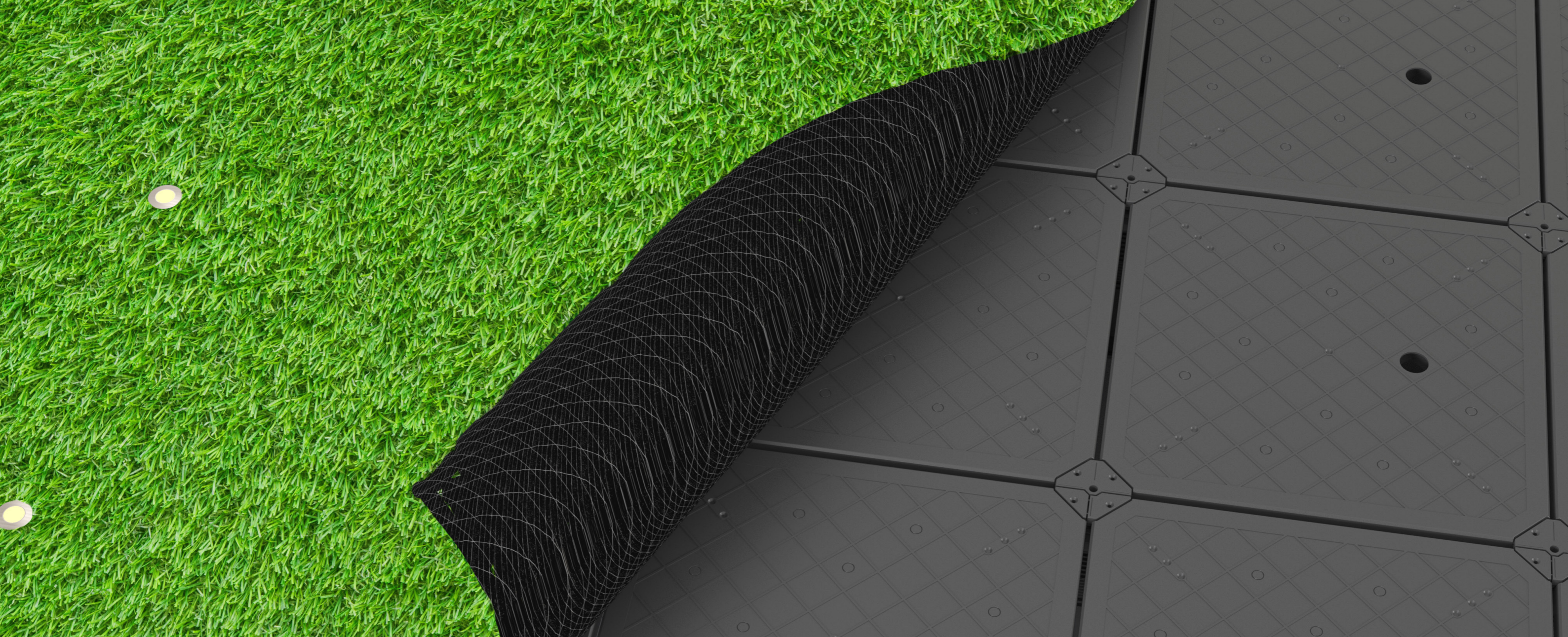


Dampening Pad



Varying Size Pavers

Supports are required at the corners and the centre of VersiScape™.



Artificial Landscape Assembly

VersiScape™ supports the installation of artificial landscapes, creating a chamber to conceal mechanical and electrical services, facilitate rapid surface drainage and all the benefits of a raised floor system whilst allowing freedom to install various artificial landscapes.



VersiJack®

Pedestal

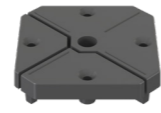


Spacer Tab



Wall Spacer

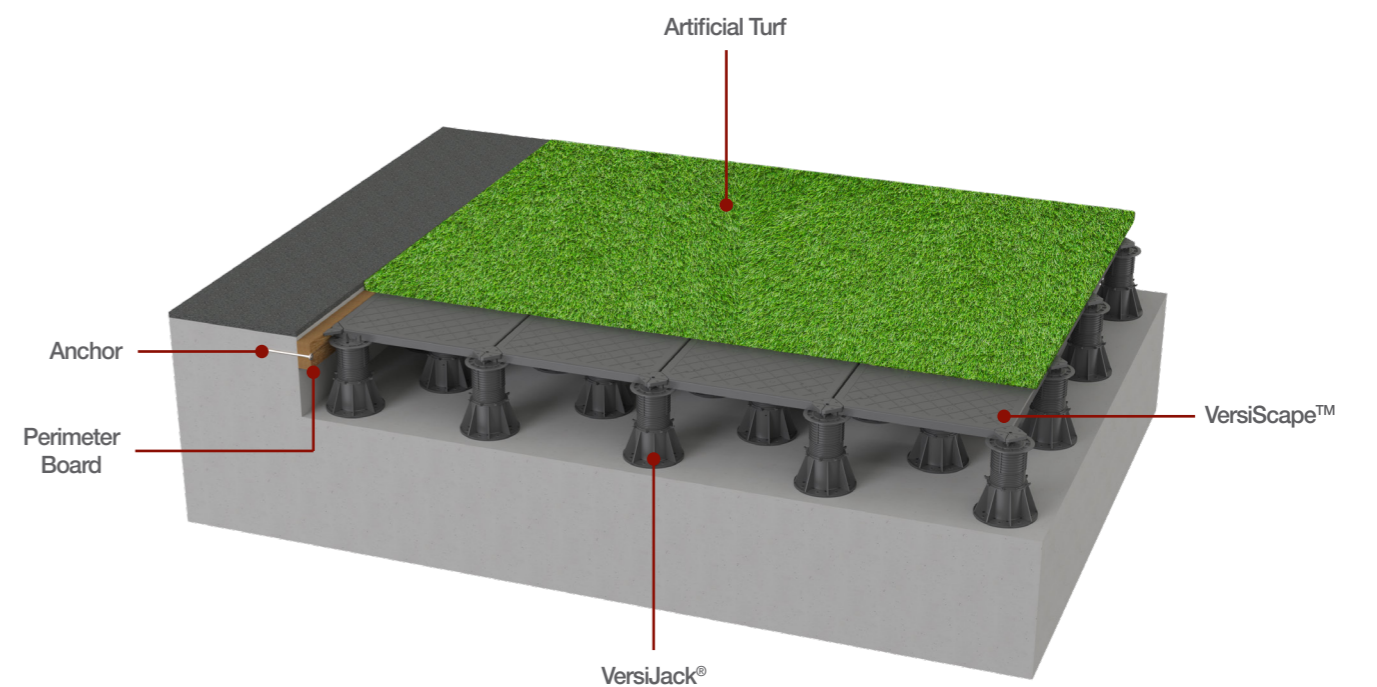
Accessories



Infill Block



Dampening Pad





Technical Specifications

Product

Material	PP
Dimension (L x B x H)	600 (L) x 600 (B) x 32 (H) mm
Weight	2.65 kg
Coverage	~ 2.8 pcs/m ²
Spacer tab posts	
- height	20 / 44 mm
- gap between VersiScape™	6 mm
- gap between tiles	4 mm
Spacer pad	
- height	12 mm
- gap	3/5 mm
Wall spacer	
- gap	10 mm
Biological/ chemical resistance	Unaffected by moulds and algae. Good resistance to alkali and bitumen

Assemblies

Conventional Paver

Allowable distributed loads*	>5 kN/m ²
Ultimate breakage load	>580 kg

Variable Paver/Artificial Landscape

Allowable point loads (150x150 mm plate)

- 3 mm deflection	>120 kg
- 6 mm deflection	>230 kg
- 9 mm deflection	>550 kg

* uniformly distributed live loads on commercial raised floor areas should not exceed 5.0 kN/m².

The panels have four reinforcement bars included and the values above reflect the system tested with all its components.

With the exception of ultimate breakage load, a safety factor of 1.5 is added to the values.



Elmich: Singapore Brand. International Network.

We are a leader in ecologically-minded urban landscaping, waterproofing and stormwater management solutions. Through a network that spans 30 countries in 6 continents, Elmich is committed to delivering innovative and sustainable building solutions to developers, architects and builders worldwide.

Since our founding, Elmich has always understood that every project and customer is different. To achieve this, we have established a dedicated research team focused on the design and testing of highly-customised solutions for the built environment. We have accumulated numerous registered designs and patents for proprietary Elmich products through the years – a testament to our expertise and technical know-how. In spite of this, Elmich quality assurance processes are still continuously reviewed and refined for our customers, partners and the communities that we serve.

As we embrace innovation and technology, Elmich also pledges to give back to the global community by managing and containing climate change in ways that we can. We believe that this is our responsibility as citizens of the world.

So what makes Elmich different?

The answer is our unwavering commitment to providing quality green building solutions, through precision, excellence, expertise and the synergies working alongside our global network of partners; to construct the cities of tomorrow. This, is what makes the Elmich Difference.



Note The information provided in this brochure is based on current knowledge and experience and does not infer any legally binding assurance or warranty, expressed or implied. Intending purchasers should verify whether any changes to specifications or applications or otherwise have been made since the issue of this literature. Environmental-friendly recycled materials are used wherever possible and physical product properties including colour may differ due to source of raw materials used. Colour may also fade due to UV exposure. All components of the product are designed for specific application, design calculations and any variation and/or deviation therefrom shall be the responsibility of the specifier and/or user.