

# VersiPave<sup>®</sup>

## Paver Support



### Creating Cities Where Urban Meets Nature

*For circulation in Australia only*

### Our Innovation Your Solution

VersiPave<sup>®</sup> pedestals are engineered to provide a versatile and cost-effective solution to support raised pavers in an eco-friendly way. It provides a cavity to conceal services, improves heat and sound insulation, and facilitates rapid surface drainage whilst allowing waterproofing and services to remain accessible.

Engineered in Australia



# VersiPave®

VersiPave® is a height-adjustable pedestal for paver or tile support, engineered to provide a cost-effective solution to support raised pavers with inconsistent or uneven thickness. It provides a cavity to conceal services, improves heat and sound insulation, and facilitates rapid surface drainage whilst allowing waterproofing and services to remain accessible. It also eliminates efflorescence and algae growth, effectively reducing paver maintenance costs.

## About VersiPave®

VersiPave® is a pedestal for paver support engineered to reduce material, construction, and lifecycle costs. Equipped with a unique 'step' design for precise adjustments of 1 mm increments, it caters to a height range of 12 mm to 45 mm. Modular Extenders can be used for additional height increments.

Chocks on the VersiPave® can be adjusted independently to support raised pavers with different thicknesses, ensuring a levelled surface.

VersiPave® can be snapped into halves and quarters to allow flush placement along wall edges and corners. This reduces the total number of pedestals required compared to other systems in the market.



### VersiPave® 12P

VersiPave® 12P offers the lowest base height of the VersiPave® series, starting from 12 mm and extending up to 24 mm. This pedestal is ideal for low height installations.

Design features: **2 4 6**



### VersiPave® GP

VersiPave® GP offers a base height range of 24 mm to 35 mm, which can be further increased by using proprietary Extenders. A detachable 0.5 mm tab allows for minor adjustments when required.

Design features: **1 2 3 5 6**



### VersiPave® 24P

VersiPave® 24P is adjustable between 24 mm to 45 mm, which can be further increased by using proprietary Extenders. Detachable Lock Pins can be used to lock the foldable chocks at higher heights, improving stability and security.

Design features: **2 4 5 6 7**

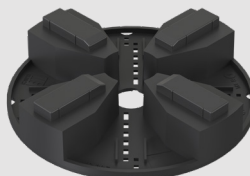
## Extenders



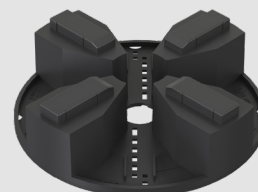
10 mm



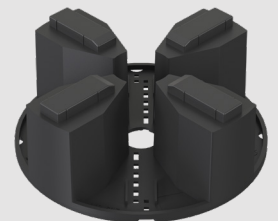
20 mm



30 mm



40 mm

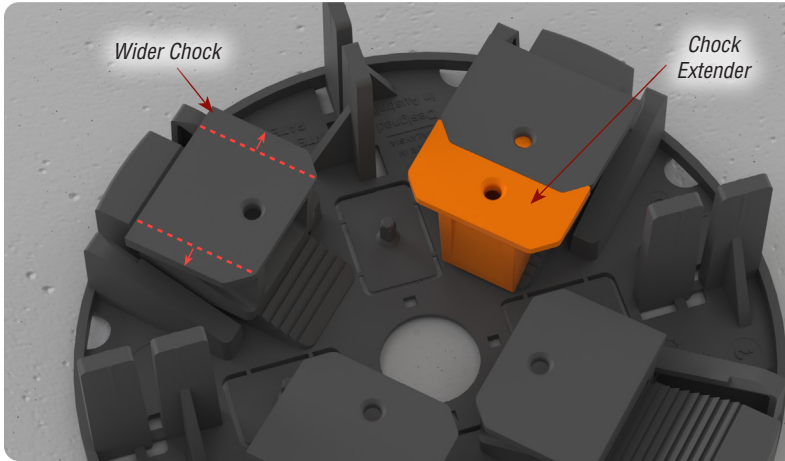


60 mm

# VersiPave® Design Features

1

## Chock Extender



### NEW FEATURE

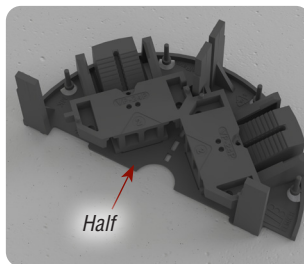
Enlarged VersiPave® GP Chocks provide greater stability at each tile corner.

Chock Extenders are used at taller heights to prevent small tiles from tipping at the corners.

2

## Sectioned Design

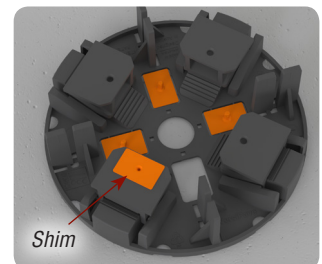
Perforated lines facilitate the pedestal to be snapped into halves or quarters for use along edges and in corners.



3

## Integrated Shim Increments

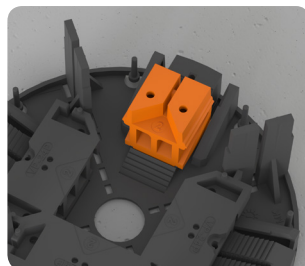
Detachable Shims provide a 0.5 mm height increment on each VersiPave® GP Chock for greater precision.



4

## Folding Chocks

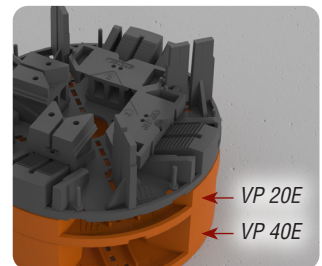
Foldable Chocks enable a greater height increment in one adjustment.



5

## Extendable Height

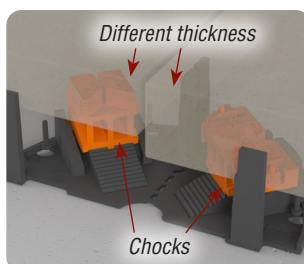
Pedestal Extenders can be added and stacked for taller heights.



6

## Independent Chocks

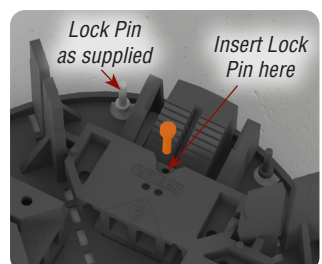
Independent Chocks are adjusted in 1 mm increments to ensure pavers of varying thickness form a levelled surface.



7

## Lock Pins

Lock Pins on VersiPave® 24P are detached and inserted into chocks to secure them at the desired height.



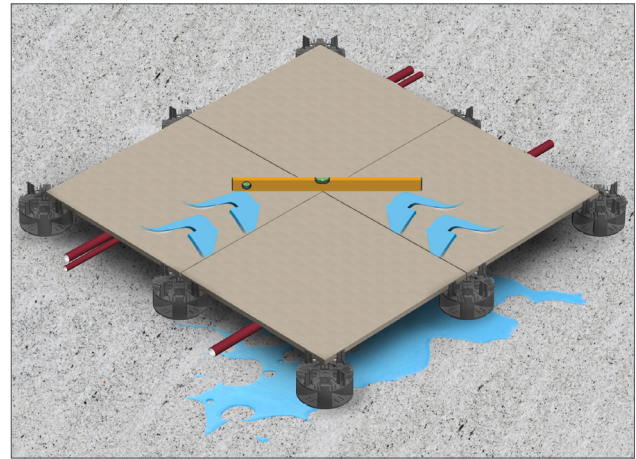


# Technical Specifications

	VP 12P	VP GP	VP 24P
Material	PP	PP	PP
Height range (mm)	12–24	24–35	24–45
Ultimate compressive strength* (kN)	36	24	32
Base diameter (mm)	165	165	165
Spacer tab post			
- Height (mm)	30	40	53
- Thickness (mm)	4	4	4
Marginal adjustments (mm)	1	1/2	1
Extenders (mm)	-	10 / 20 / 30 / 40 / 60	
Biological/Chemical resistance	Unaffected by moulds and algae. Good resistance to alkali and bitumen		

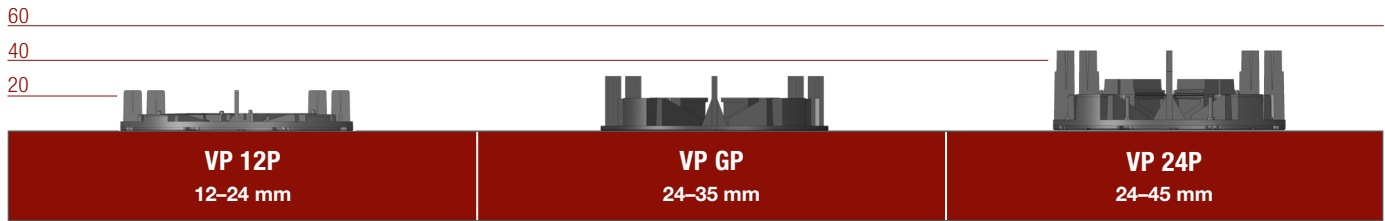
\*Note: Any product warranty for VersiPave® is voided if non-proprietary Extenders are used.

# Advantages

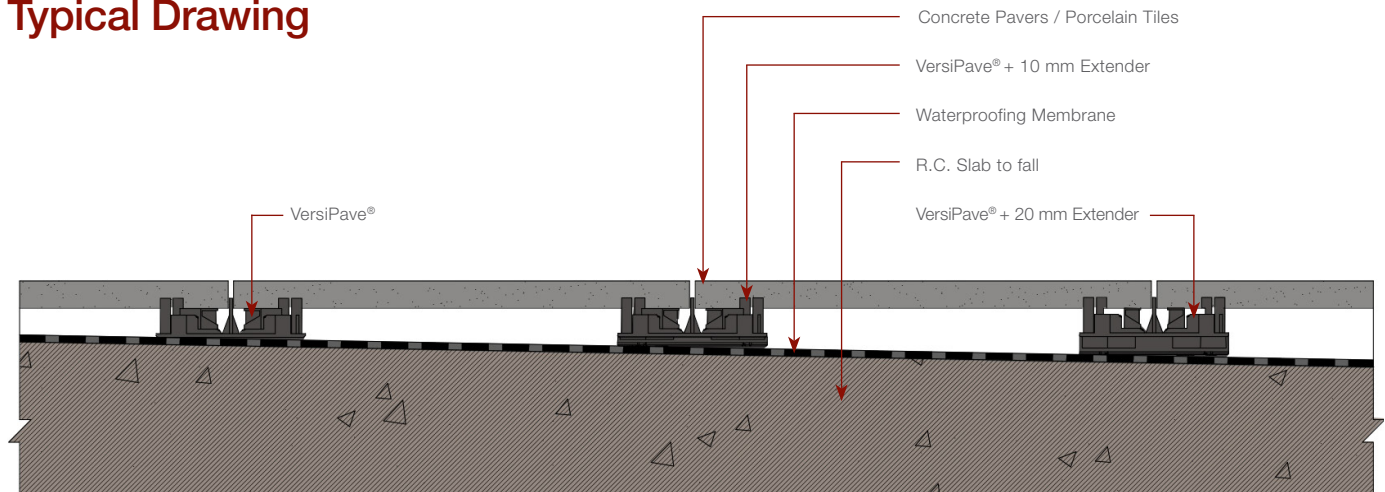


- Conceals services
- Promotes drainage
- Portability of flooring
- Thermal insulation
- Creates space for services
- Acoustic insulation
- Recyclable components
- Eliminates efflorescence
- 20 year product warranty
- Access to waterproofing membrane

## VersiPave® Height Table (mm)



## Typical Drawing



Distributed by:

**Note:** The information provided in this brochure is based on current knowledge and experience and does not infer any legally binding assurance or warranty, expressed or implied. Intending purchasers should verify whether any changes to specifications or applications or otherwise have been made since the issue of this literature. Environmentally-friendly recycled materials are used in product manufacture wherever possible. Physical product properties including colour may differ due to source of raw materials used. Colour may also fade due to UV exposure. All components of the product are designed for specific application, design calculations and any variation and/or deviation therefrom shall be the responsibility of the specifier and/or user. For circulation in Australia only