



VersiPave VP-4P

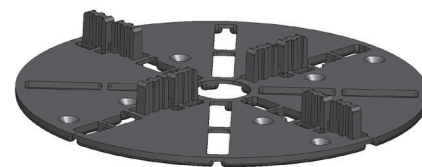
VersiPave 4P Pedestal is an ultra-low fixed-height pedestal designed to support pavers and facilitate drainage beneath pavers. It allows the waterproofing to remain accessible and reduces efflorescence and algae growth.

VersiPave VP-4P

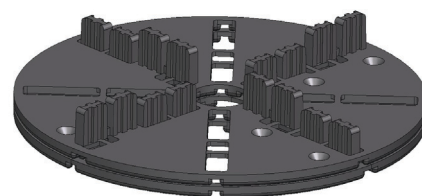
It is used to support concrete, stone, tile and timber pavers. The integrated spacer tabs maintain position and a consistent gap between pavers. Besides creating a drainage layer, VersiPave 4P also provides a protection layer against physical damage when pavers are laid directly onto the waterproofing membrane.

VersiPave 4P is 4mm high and may be double-stacked to achieve an effective height of 8mm. Further height adjustments are possible using Elmich 1mm and 2mm Neoprene shims. The 12mm high spacer tabs do not protrude above the finished paved surface when used with low profile pavers.

The ability of VersiPave 4P to be separated into halves or quarters enable flush placement along wall edges and also into and around corners.



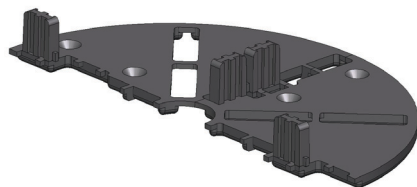
Single VP-4 as 4mm pedestal



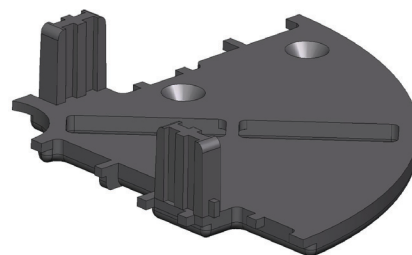
Double VP-4 as 8mm pedestal

Advantages

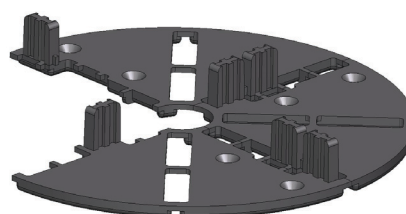
- Suitable for all types of pavers.
- Maintains position and gaps between pavers.
- Provides drainage layer beneath pavers.
- Protects waterproofing membrane.
- Not visible above paver surface.
- Cost-effective and simple installation.
- Manufactured from environmentally-friendly recycled polypropylene.



1/2 VP-4P along wall edge



1/4 VP-4P into corner



3/4 VP-4P around corner

Enhancing the Urban Experience

Distributed by:

Note: The information provided in this brochure is based on current knowledge and experience and does not infer any legally binding assurance or warranty, expressed or implied. Intending purchasers should verify whether any changes to specifications or applications or otherwise have been made since the issue of this literature. Environmentally-friendly recycled materials are used in product manufacture wherever possible. Physical product properties including colour may differ due to source of raw materials used. Colour may also fade due to UV exposure. All components of the product are designed for specific application, design calculations and any variation and/or deviation therefrom shall be the responsibility of the specifier and/or user.



ELMICH PTE LTD www.elmich.com

Singapore: (+65) 6356 2800

info@elmich.com

Singapore | Seattle | Sydney | Zurich | Guangzhou | Shanghai



© Elmich Pte Ltd EWS/001-V1-1214SG